

City of Salina, Kansas North Salina Community Development

Barbara Goode, PE
Kansas State University
Pollution Prevention Institute

Salina, Kansas





U.S.EPA Building Blocks for Sustainable Communities Program

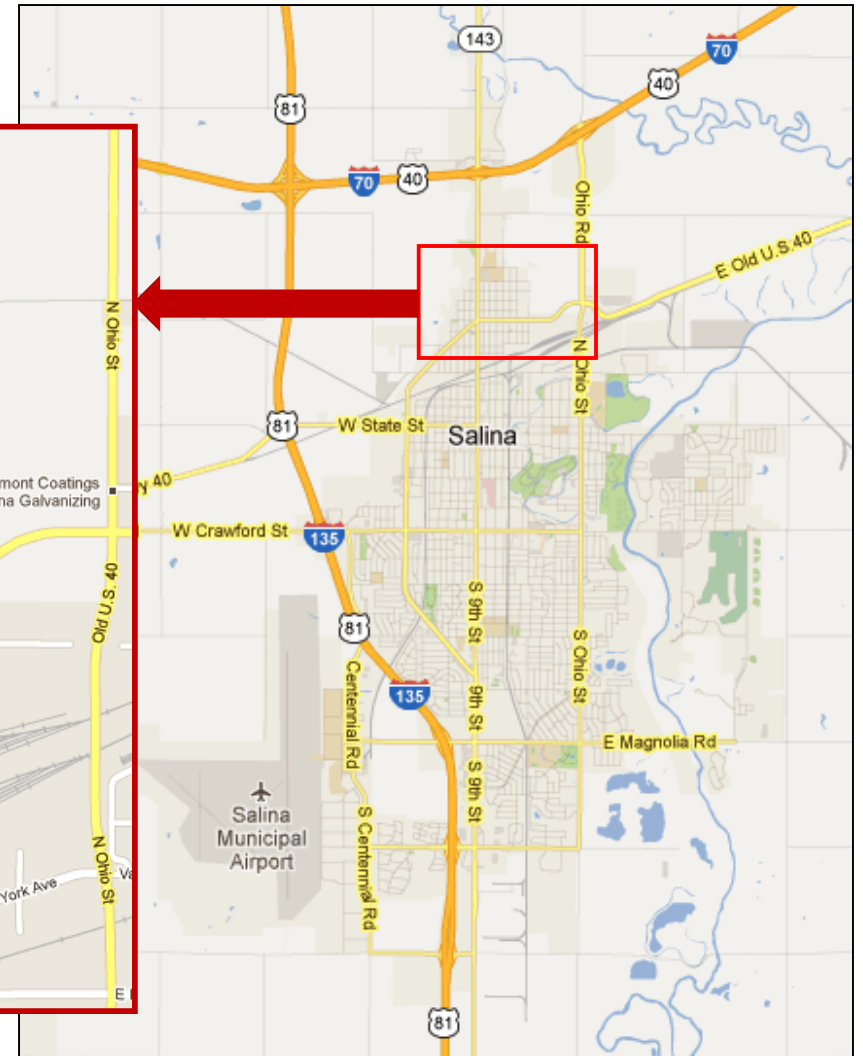
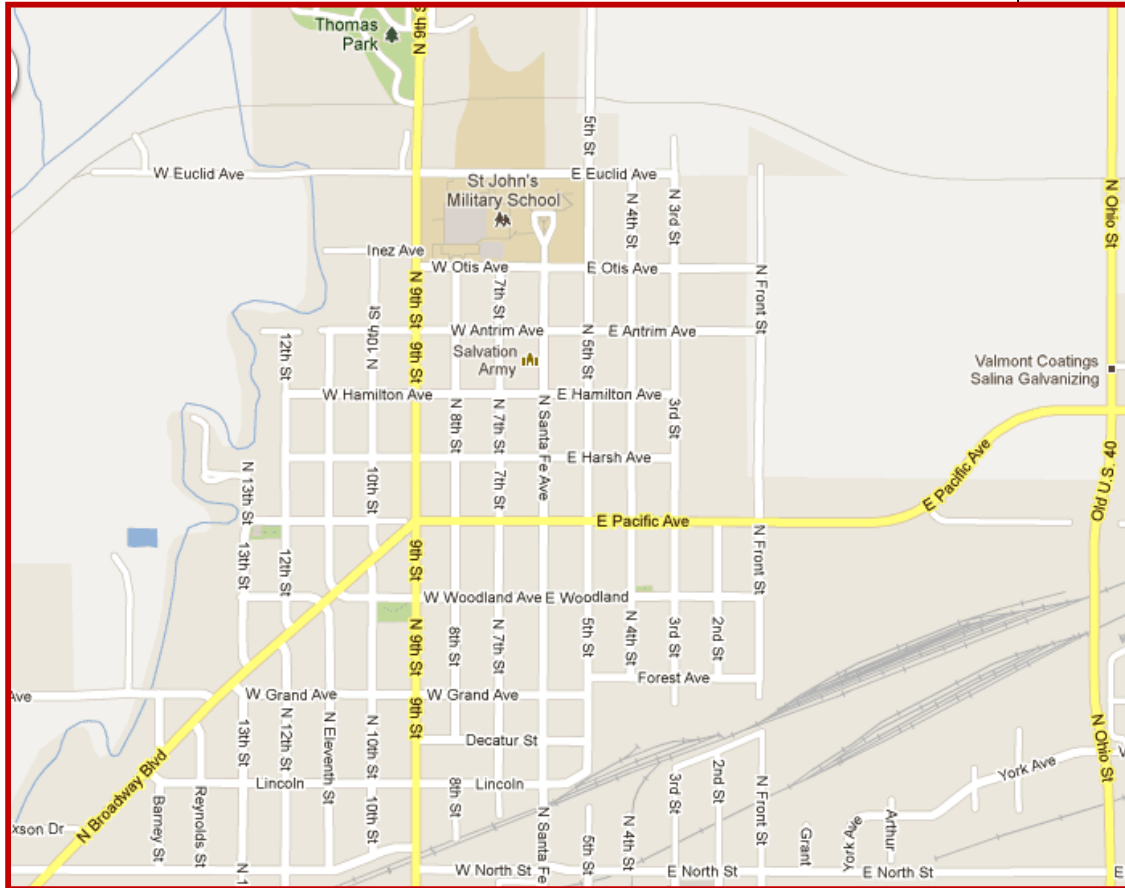
- Tool #3: *Sustainable Design and Development*
 - Applied October and received
- Tool #4: *Smart Growth Zoning Codes for Small Cities and Rural Areas*
- Tool #6: *Using Smart Growth to Produce Fiscal and Economic Health*
 - Applied February, then October 2011



North Salina Community Development, Inc.

- Established in Winter 2010
- Meets monthly
- Operated by steering committee
 - Winter 2010 – December 2012
- Operated by Board of Directors
 - Officers elected January 2013
 - By-laws approved in December 2012
- Applied for 501(c)3 non-profit status

North Salina



The Workshop

Technical Assistance on Sustainable Design and Development

Salina, Kansas
March 29-30, 2012

Featured Facilitators:

Alan Steinbeck, AICP, Project Manager
Renaissance Planning Group

David Doyle, Sustainable Communities Coordinator
US Environmental Protection Agency, Region 7

Thursday, March 29

Location: St. John's Military School-Stevens Center

5:30 to 6:15 Overview: "Smart Growth" and "Sustainable Development"

6:15 to 7:30 Strengths and Challenges Breakout Sessions

Friday, March 30

Location: Visit Salina Chamber of Commerce Annex

8:30 to 9:00 Overview: "Smart Growth" and "Sustainable Development"

9:00 to 10:00 Site Selection Exercise

10:15 to Noon Discussion of Key Issues

Noon to 1:00 Identification of Barriers and Benefits

2:00 to 3:30 Conceptual Design Breakout Sessions

4:30 to 6:30 Open House to Review Results

For more information contact:

Barbara Johnson, K-State Pollution Prevention Institute
785-452-9456 barbj@ksu.edu

Gary Hobbie, Director, Community & Development Services
City of Salina 785-309-5720 gary.hobbie@salina.org

Barbara Young, NSCD Chairperson
785-825-6050 triadsales@triadmfinc.com



Building Blocks for
Sustainable Communities

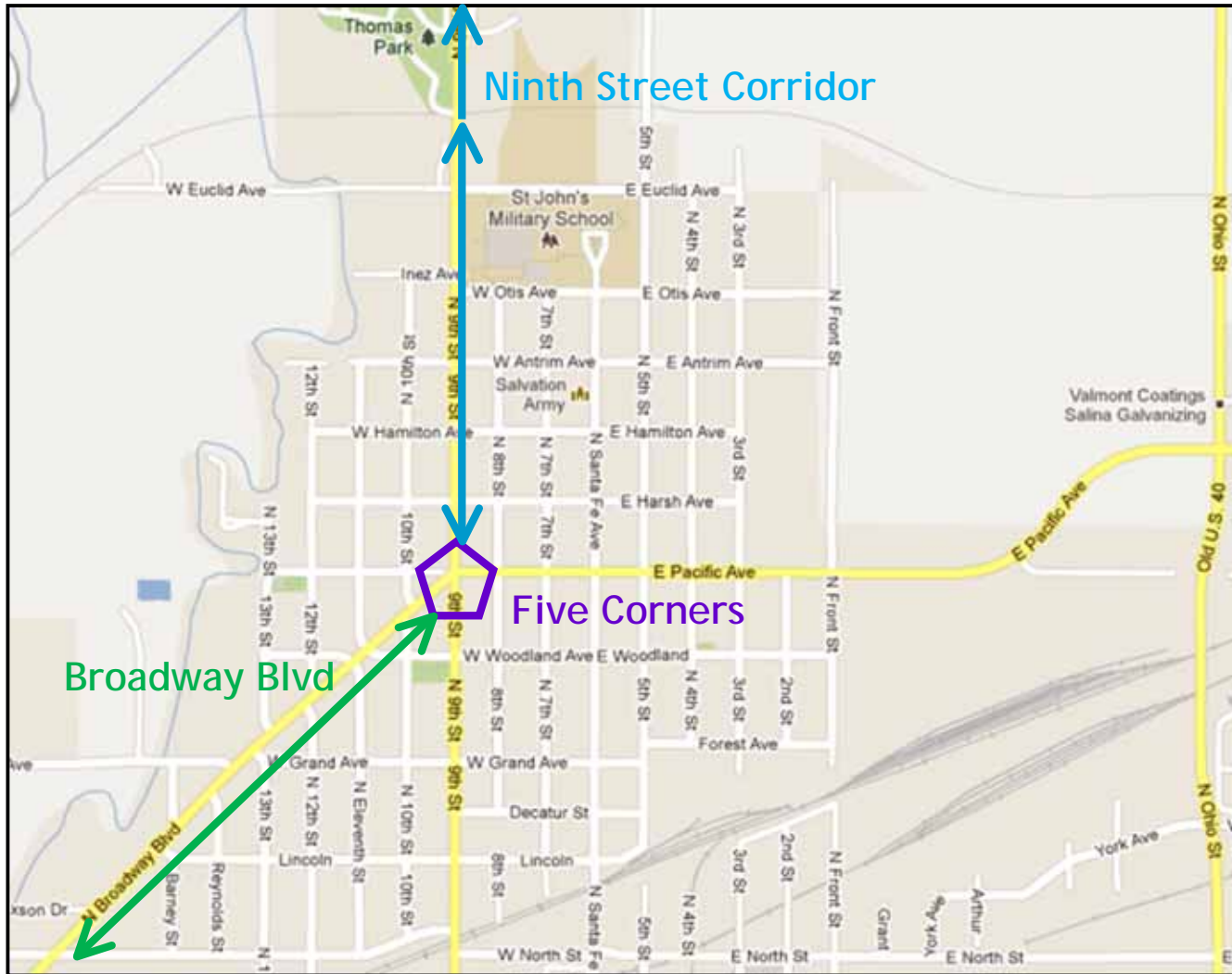
As the result of a letter of interest submitted by North Salina Community Development, Inc. (NSCD) in October 2011, the City of Salina is hosting a technical assistance workshop sponsored by the US Environmental Protection Agency. This free workshop will focus on key issues and strategies for targeted growth and development in the north Salina area, which will ultimately enhance the entire community. By targeting development toward areas with existing infrastructure and proximate to neighborhood assets and resources, NSCD and the civic leaders seek to use this process to work hand-in-hand with the city's *Comprehensive Plan*, as well as reduce costs associated with new development.

The EPA-lead team will conduct a workshop with interested stakeholders and the general public to discuss strategies and policies related to sub-area planning within the region. This process will assist community leaders in better understanding the key considerations and factors that guide growth and development. The discussion will draw from EPA's publication "*Essential Smart Growth Fixes for Urban and Suburban Zoning Codes*" to illustrate options, best practices and key concepts for implementation. After the workshop, the EPA team will provide the city with specific action steps for implementation based on the conversation and input from the community.

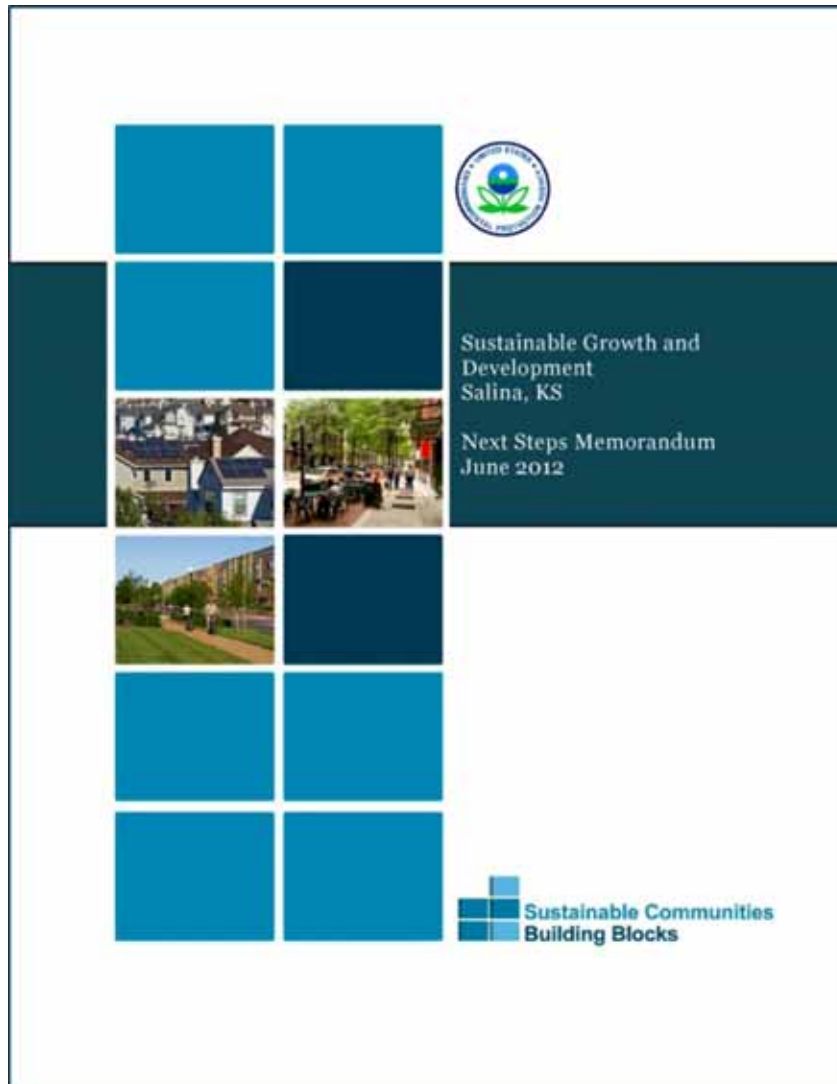
The workshop is free and open to the public. Please RSVP to Mike Wilson at mike_wilson_422@me.com or by calling 785-825-6694.



Subareas

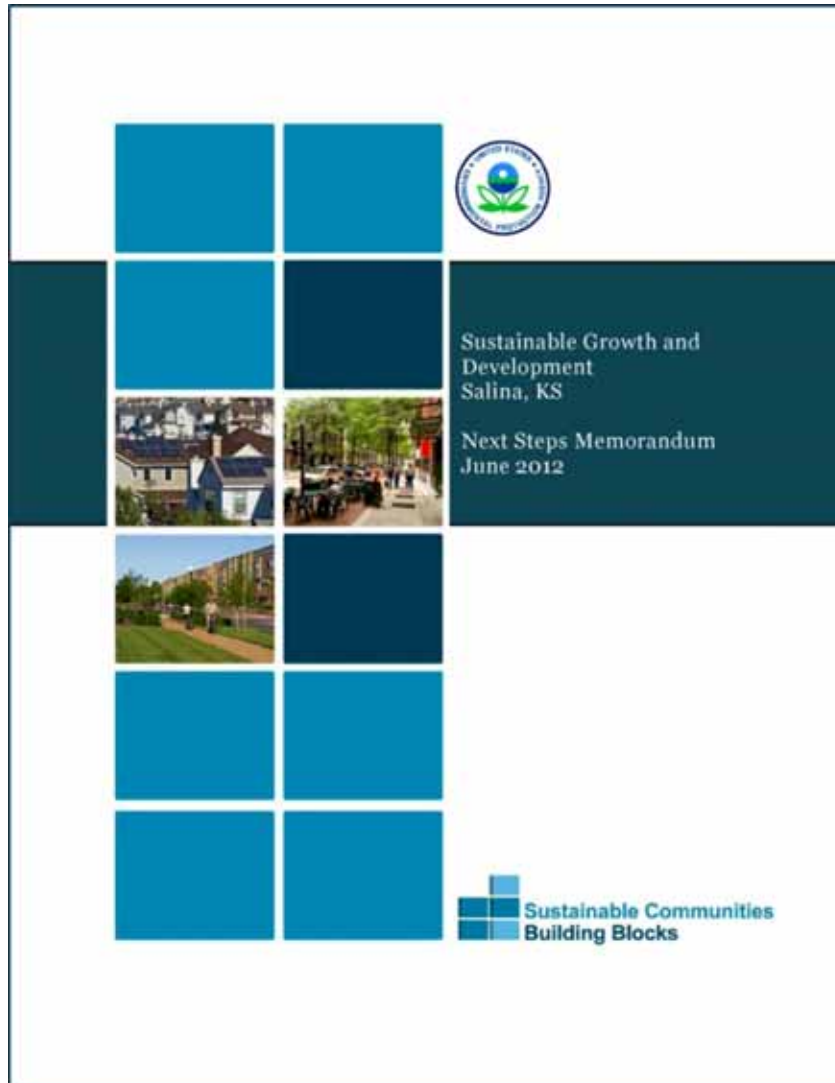


Next Steps Memorandum



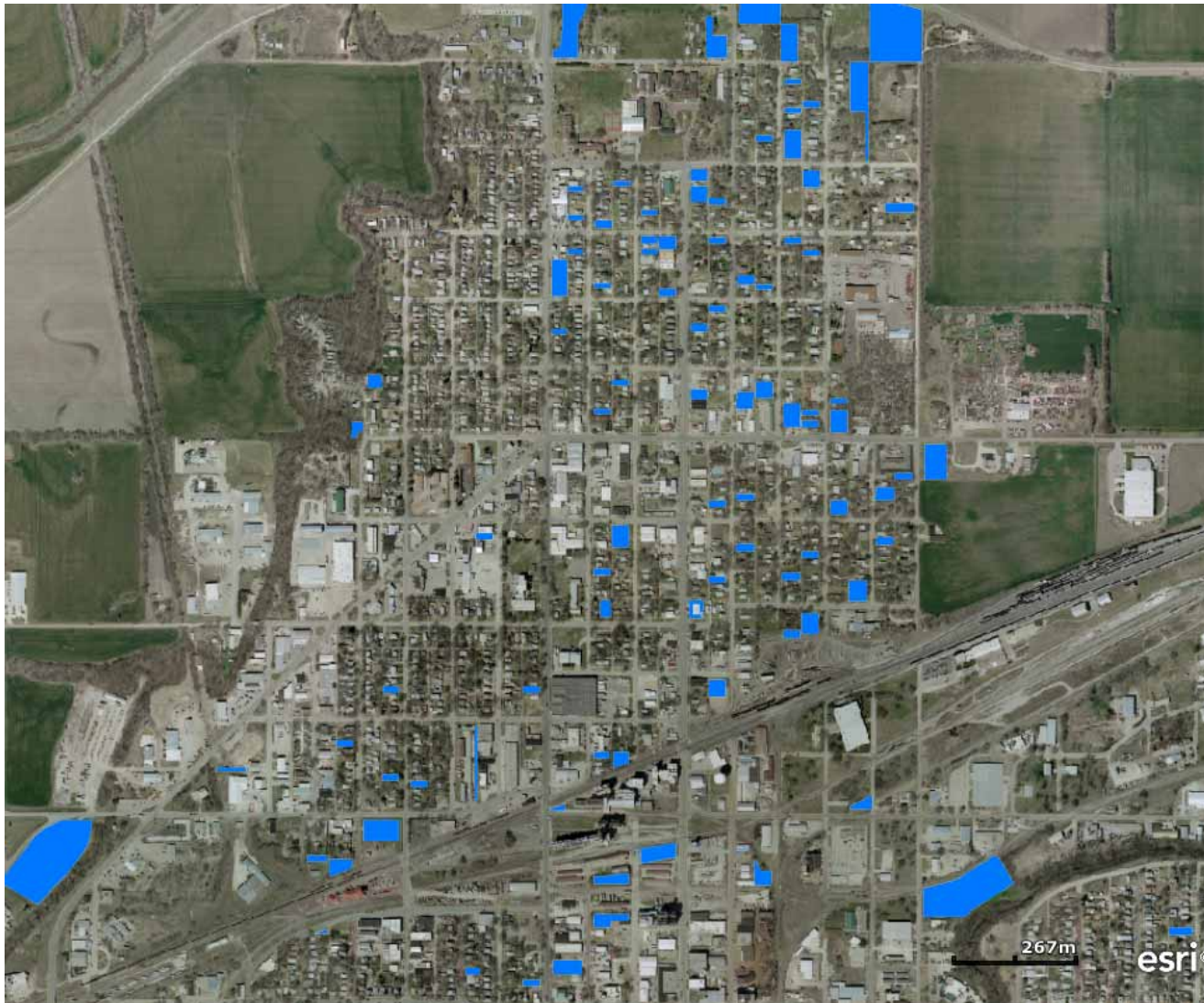
- Key strengths & weaknesses
- Key sustainable design and development opportunities
- Key actions/timeframes/responsibilities

Next Steps Memorandum



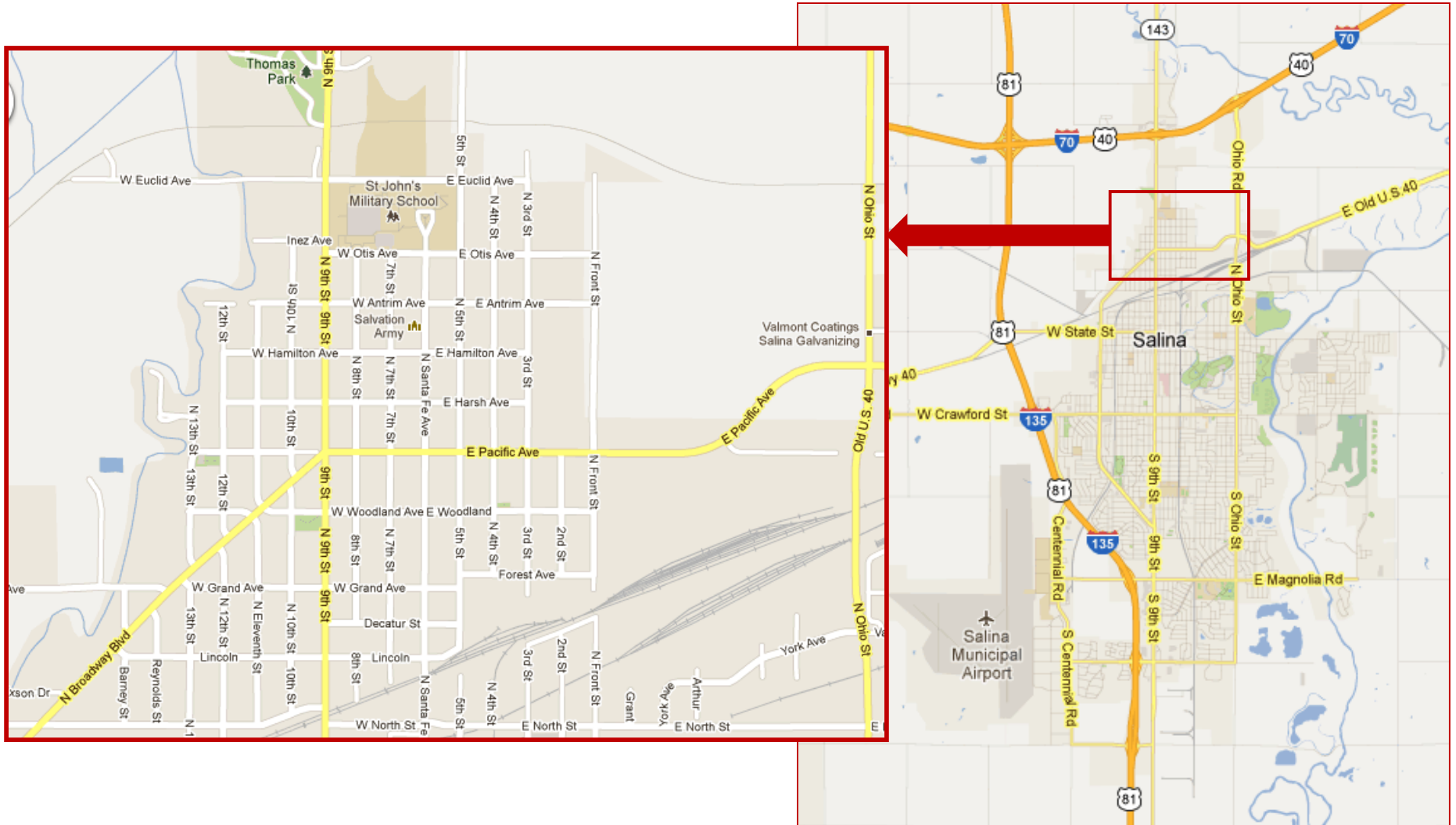
- Key strengths & weaknesses
- Key sustainable design and development opportunities
- Key actions/timeframes/responsibilities

Primary Strengths



- Vacant lots/
out parcels

Secondary Strengths

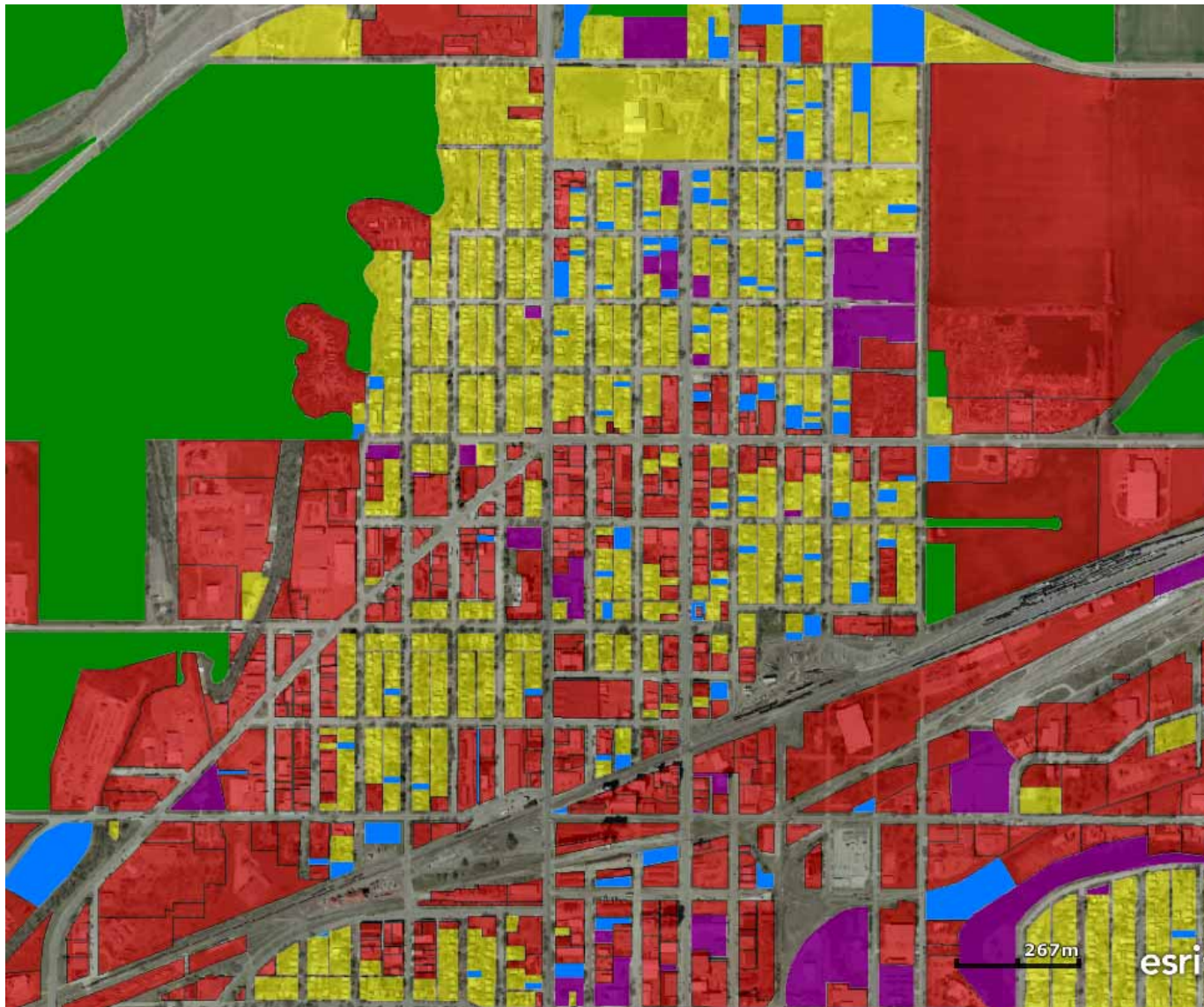


Primary Weaknesses



■ Commercial

Primary Weaknesses



Land Use

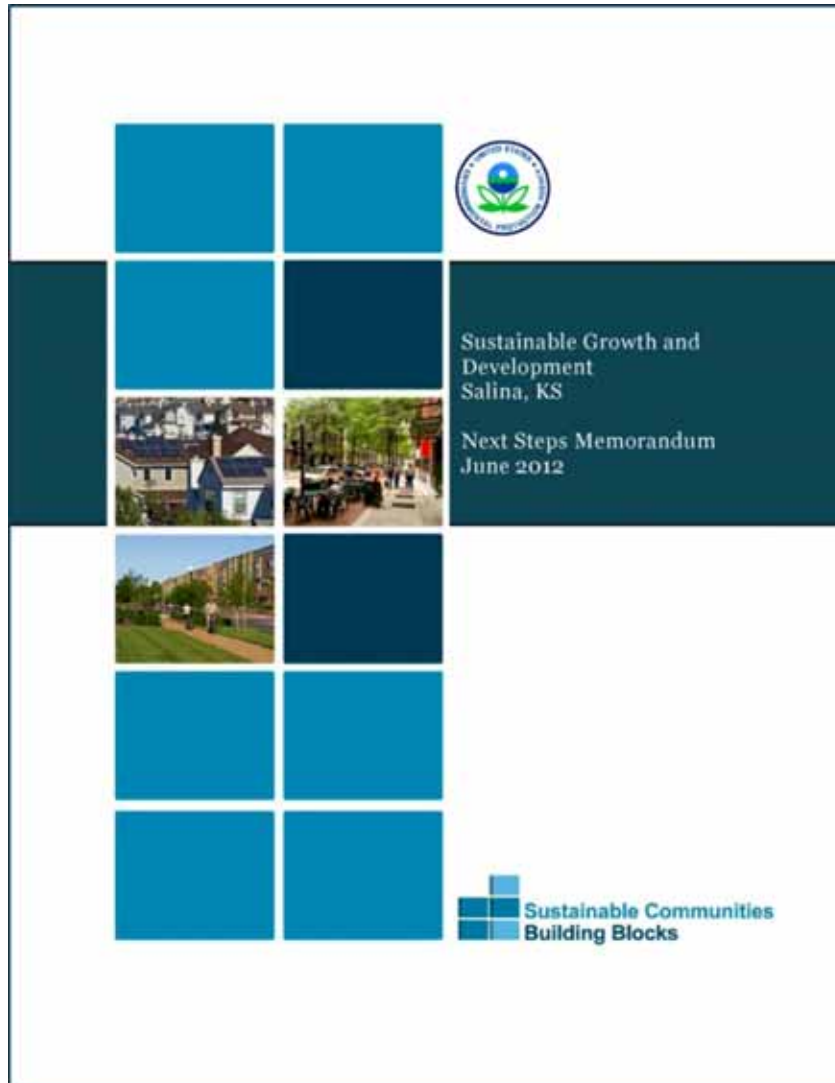
- Residential
- Vacant lots/
out parcels
- Commercial

Secondary Weaknesses



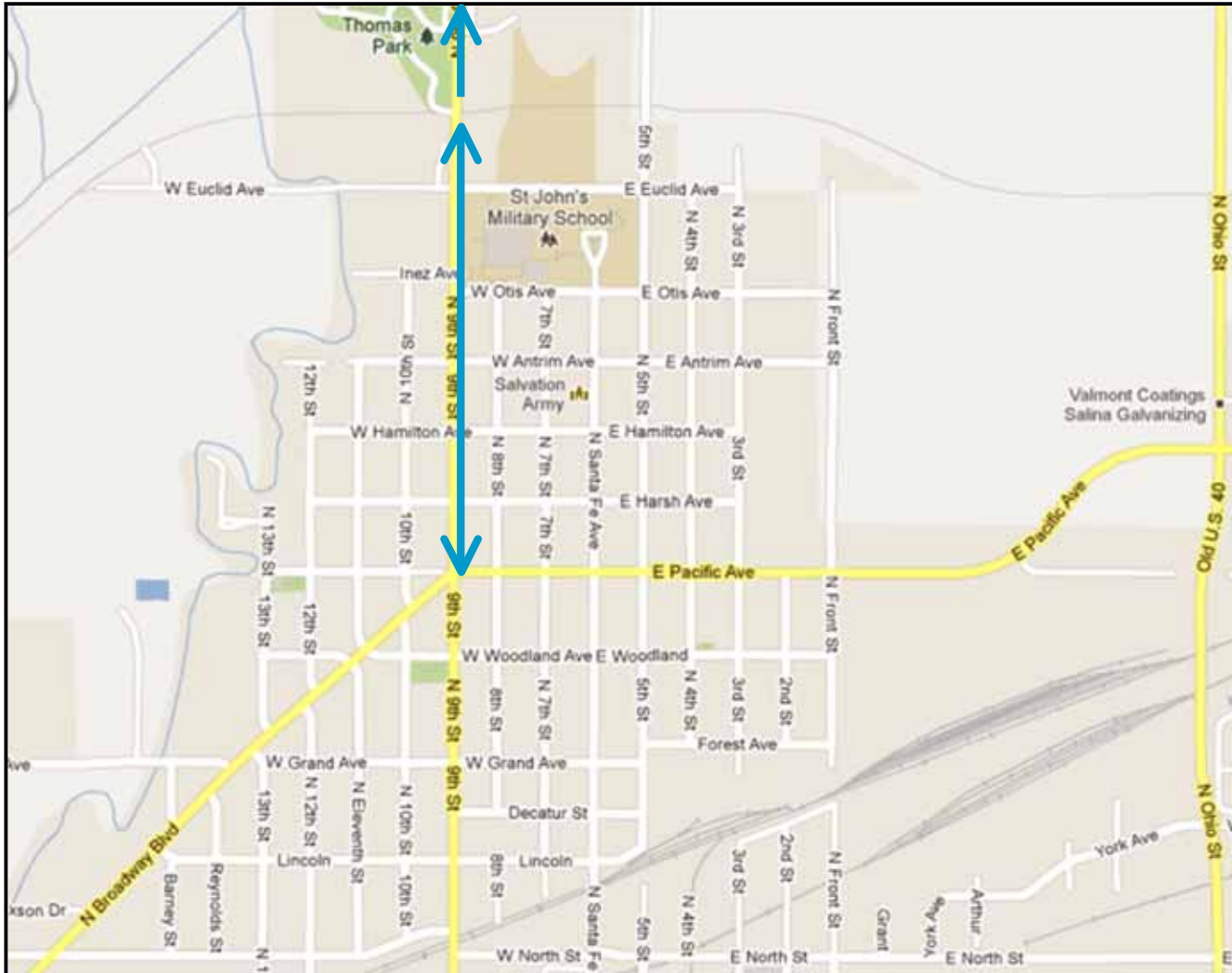
■ Residential

Next Steps Memorandum

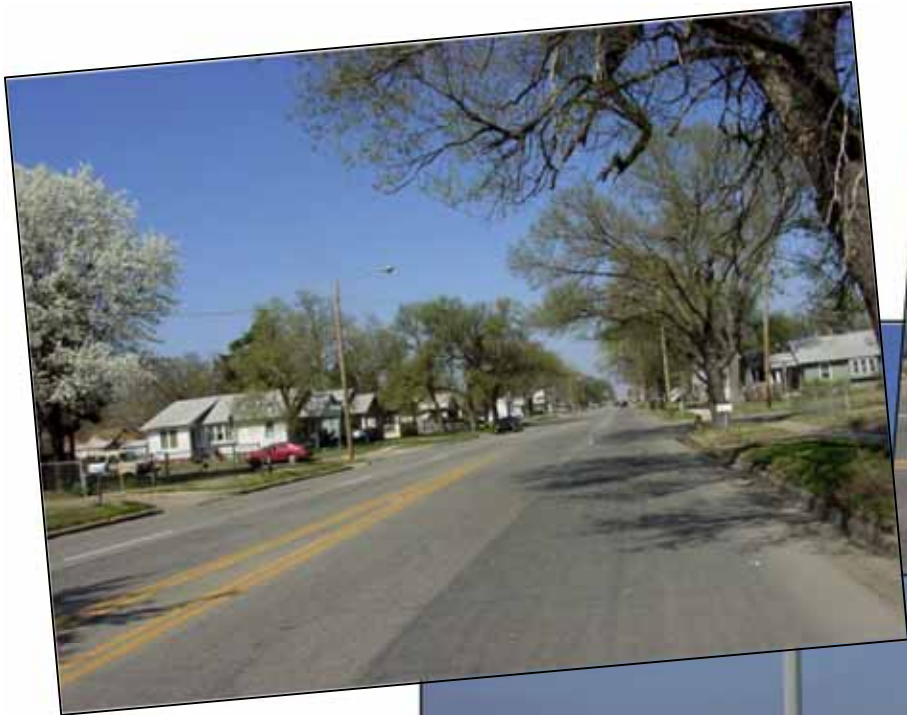


- Key strengths & weaknesses
- **Key sustainable design and development opportunities**
- Key actions/timeframes/responsibilities

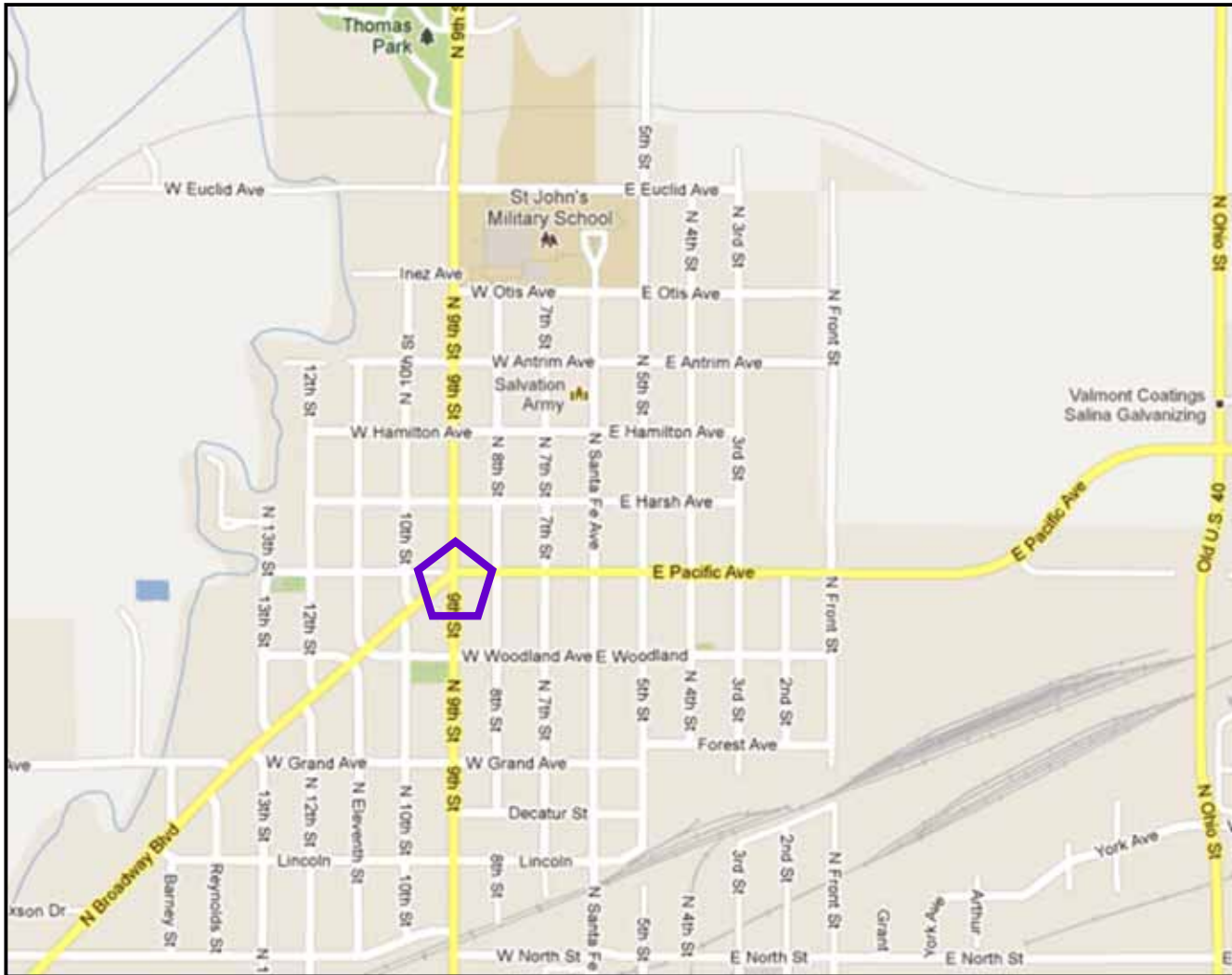
Subarea - Ninth Street Corridor



Subarea - Ninth Street Corridor



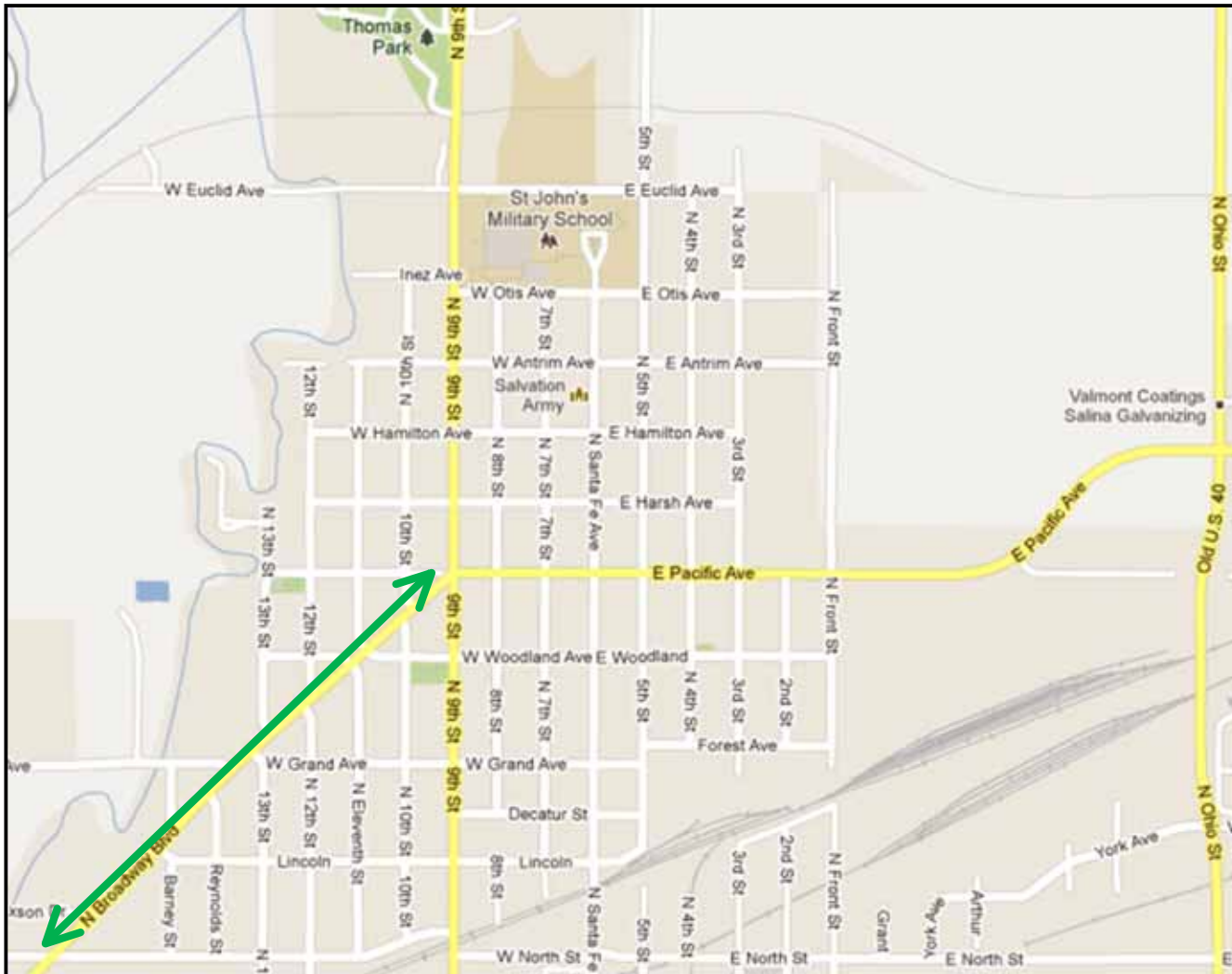
Subarea - Five Corners



Subarea - Five Corners



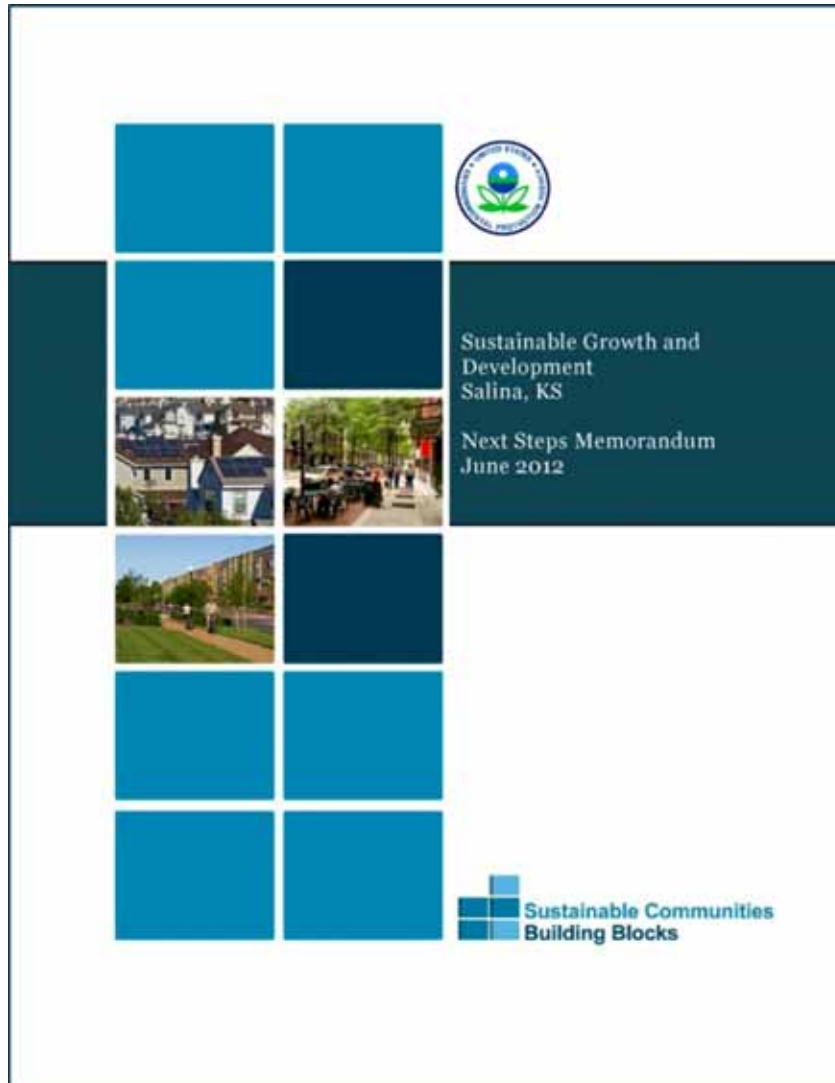
Subarea - Broadway Blvd. from North Street to Five Corners



Subarea - Broadway Blvd. from North Street to Five Corners



Next Steps Memorandum



- Key strengths & weaknesses
- Key sustainable design and development opportunities
- **Key actions/
timeframes/
responsibilities**

Key Actions

1. Continue to engage/inform stakeholders
 - a. Make contacts by going door-to-door
 - b. Hold events that build community strength
 - c. Create a NSCD newsletter
 - d. Provide separate venues for discussion
 - 1) Residents
 - 2) Business
 - 3) Property owners

Key Actions

2. Establish a clear vision and direction. Identify the people needed.
 - a) All volunteers
 - b) Volunteers plus paid staff
 - c) Volunteers and shared City staff
 - d) Longer term – some level of permanent staff
3. Develop a framework plan for north Salina to establish general guidance for moving forward.
 - a) Could be expansion and clarification of Building Blocks conversation
 - b) Could be an open charrette process

Key Actions

4. Seek funding mechanisms.
 - a) Set up as a 501(c)(3)
 - b) TIF (tax increment financing)
 - c) L3C (low-profit limited liability company)
 - d) Grants
5. Undertake many lower-cost, viable and visible project to increase public awareness.
6. Identify and tackle changes to existing policies and procedures to better support smart growth development.

Summary

- Acknowledgements
 - Mike Wilson for the photos
 - Jon Blanchard for the land use maps
 - Google Maps for the location maps
 - Barb Young, NSCD President, for giving me this opportunity!
- Contact information
 - Barb Goode
K-State Pollution Prevention Institute
barblj@ksu.edu
785-452-9456